

ARB **FITTING INSTRUCTIONS**

ARB SRS COMPATIBLE WINCH BULL BAR TO SUIT MITSUBISHI TRITON GLS 09/2001 ONWARDS.

PART No. 3446060

WARNING

FOR VEHICLES EQUIPPED WITH SRS AIRBAG
WHEN INSTALLED IN ACCORDANCE WITH THESE INSTRUCTIONS, THE FRONT PROTECTION BAR DOES NOT AFFECT OPERATION OF THE SRS AIRBAG.

TAKE NOTE OF THE FOLLOWING:

- **THIS PRODUCT MUST BE INSTALLED EXACTLY AS PER THESE INSTRUCTIONS USING ONLY THE HARDWARE SUPPLIED.**
- **IN THE EVENT OF DAMAGE TO ANY BULL BAR COMPONENT, CONTACT YOU'RE NEAREST AUTHORISED ARB STOCKIST. REPAIRS OR MODIFICATIONS TO THE IMPACT ABSORPTION SYSTEM MUST NOT BE ATTEMPTED.**
- **DO NOT USE THIS PRODUCT FOR ANY VEHICLE MAKE OR MODEL, OTHER THAN THOSE SPECIFIED BY ARB.**
- **DO NOT REMOVE LABELS FROM THIS BULL BAR.**
- **THIS PRODUCT OR ITS FIXING MUST NOT BE MODIFIED IN ANY WAY.**

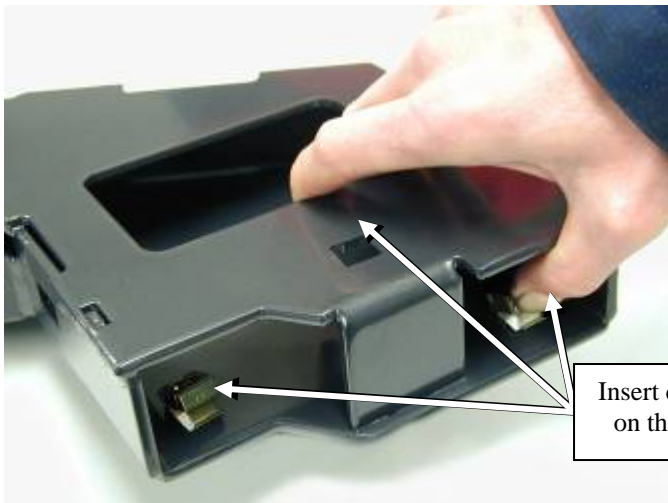
USE	PART No.	QTY.	DISCRIPTION
IMPACT ABSORBER TO CHASSIS	6151088	4	BOLT M10 x 1.25 x 35mm
	4581048	6	WASHER SPRING M10
	4581040	8	WASHER FLAT M10
	6151204	2	BOLT M10 x 1.5 x 35mm
	6151026	2	NUT M10 x 1.5
	6151304	6	NUT CAGE M10
	3756612L	1	IMPACT ABSORBER LHS
	3756612R	1	IMPACT ABSORBER RHS
BULL BAR TO IMPACT ABSORBERS	6151204	6	BOLT M10 x 1.5 x 35mm
	4581048	6	WASHER SPRING M10
	4581040	6	WASHER FLAT M10
STONE TRAY TO BULL BAR	6522043	1	STONE TRAY
	6151303	4	NUT CAGE M8
	6151262	8	BOLT M8 x 1.25 x 20mm BLACK
	4581045	8	WASHER FLAT M8 BLACK
	6151235	4	NUT FLANGE M8 BLACK
	4581047	4	WASHER SPRING M8 BLACK
NUMBER PLATE TO BULL BAR	6151017	2	BOLT M6 x 16
	6151046	2	WASHER FLAT M6
	6151128	2	NUT FLANGE M6
WINCH AND CONTROL BOX TO BULL BAR	4581040	4	WASHER FLAT M10
	6151262	2	BOLT M8 x 1.25 x 20 BLACK
	4581045	2	WASHER FLAT M8 BLACK
	3756292	1	CONTROL BOX BRACKET
	6151235	2	NUT FLANGE M8
	180302	10	CABLE TIE
	EG50	2	RUBBER GROMMET
INDICATORS	3500080	1	INDICATOR KIT (INCLUDING LOOMS)

TOOLS REQUIRED: Basic tool kit, Drill and 10mm long shank drill bit.

ASSEMBLY SEQUENCE



1. Remove the bumper bar and the crush cans from the vehicle. Remove the indicators and the speed nuts from the bumper bar.



2. Insert the six M10 cage nuts (three per impact absorber) into the square holes in the impact absorbers as shown.



3. Attach the impact absorbers to the chassis of the car using the same mounting points as the bumper bar. Fix in place with two (each side) M10 x 1.25 x 35 bolts, M10 spring and flat washers.

ASSEMBLY SEQUENCE



4. Adjust impact absorbers so they are even on the mounting face and the distance between the outside faces is between 777mm and 781mm.

NOTE: Do not fully tighten bolts at this stage.

WINCH INSTALLATION



ORIGINAL POSITION

NEW POSITION

5. To place the clutch handle and terminals in a convenient location, the winch gearbox must be rotated. To place the gearbox in the correct location, the gearbox must be rotated 144 degrees (4 hole spacings), in the clockwise direction when viewed from the gearbox end. Place the winch on its end and remove all of the gearbox bolts. Gently raise the gearbox just enough to rotate it. Do not completely remove the gearbox and avoid damaging the gasket. Refit all bolts and tighten.



ORIGINAL POSITION

NEW POSITION

6. To place the winch motor in the correct position the winch motor must be rotated 90° in the clockwise direction when viewed from the motor end. Place the winch on its end and remove the two motor retaining bolts. Gently raise the motor just enough to rotate it.

IMPORTANT – Do not separate the end plate of the winch motor from the body. Lift the whole motor away from the centre frame just enough to clear the locating dowel. Refit all bolts and tighten.

WINCH INSTALLATION CONTINUED



7. Loosely secure the control box bracket to the control box using the $\frac{1}{4}$ " nuts on the control box. Run the short black cables to the right hand side of the control box bracket and cable tie to the bracket through the notches and holes. Run the red cable and the small control box earth cable to the left-hand side of the control box bracket and cable tie to the bracket through the holes and notches. Tighten the nuts securing the control box bracket. Ensure the cables are secured tightly to the control box bracket.

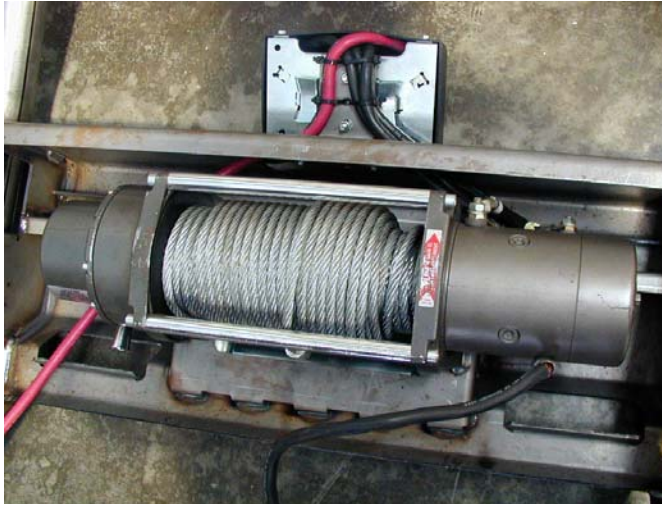


8. Assemble the rubber grommets, supplied in the fitting kit, to the large holes located in the top pan.



9. Loosely fasten the control box to the bar through the right hand side-mounting hole using an M8 black bolt, M8 black washer and M8 flange nut supplied in the winch kit. Run the red cable and control box ground cable through the left grommet. Run the three short black cables through the right grommet.

WINCH INSTALLATION CONTINUED



10. Install the winch and roller fairlead using bolts, nuts and spring washers supplied with the winch, and the four M10 flat washers supplied in the bullbar bolt kit. Adjust winch in slots until winch is centralized in the bull bar. Fasten the control box ground cable to the left side hole of the control box bracket underneath the pan. Tighten the two M8 control box bracket bolts. Wire the control box to the winch. Refer to Warn installation instructions for correct procedure.

BAR FITTMENT



11. Attach the number plate to the bull bar using two M6 x 16mm bolts, M6 flat washers and M6 flange nuts.

NOTE: When not fitting a winch into the bar the number plate can be mounted through the top outer holes, in which case the number plate will cover the roller fairlead cut out.

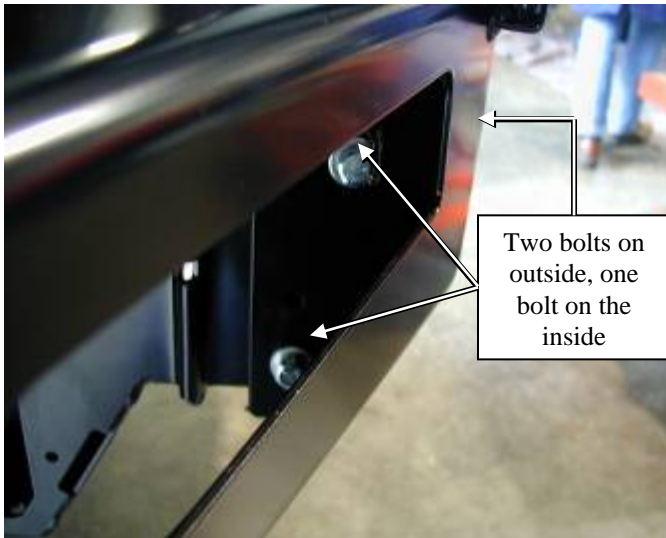


12. Fit the four cage nuts into the square holes in the bottom of the bull bar pan by inserting one side first and then squeezing with a pair of pliers.

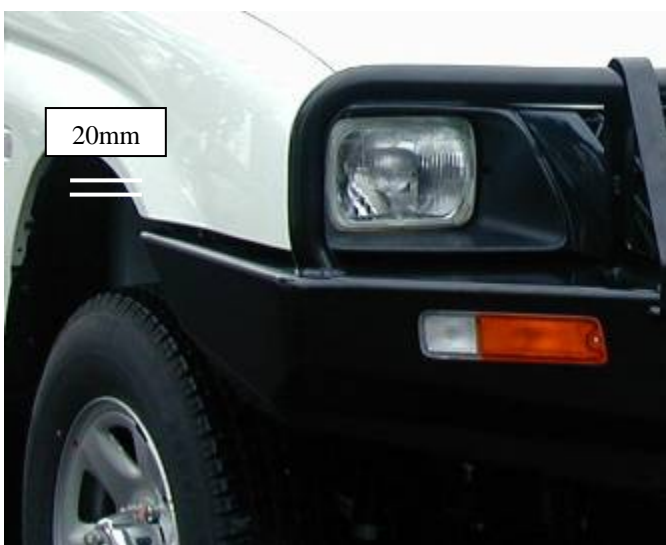
BAR FITTMENT



13. With the help of another person, carefully lift the bull bar onto the impact absorber brackets.



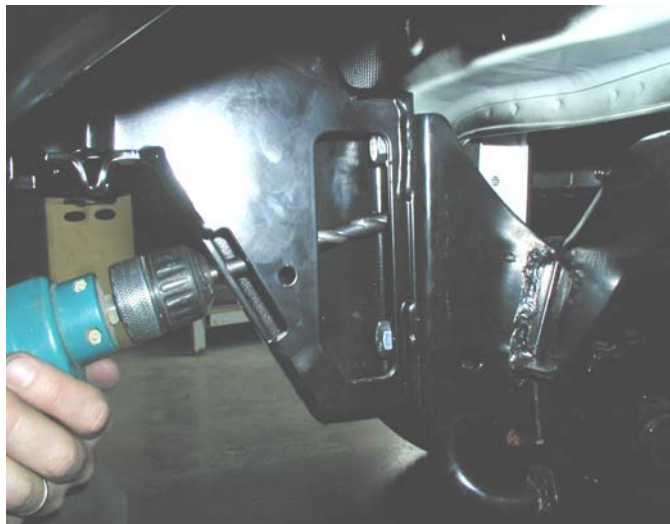
14. Fix the bar in place using three (each side) M10 x 1.5 x 35mm bolts, M10 spring washers and M10 flat washers.



15. Adjust the bull bar so that there is an even gap between the wing and the guard of approximately 20mm and that the bar sits centrally on the car.

16. Fully tighten all the bolts.

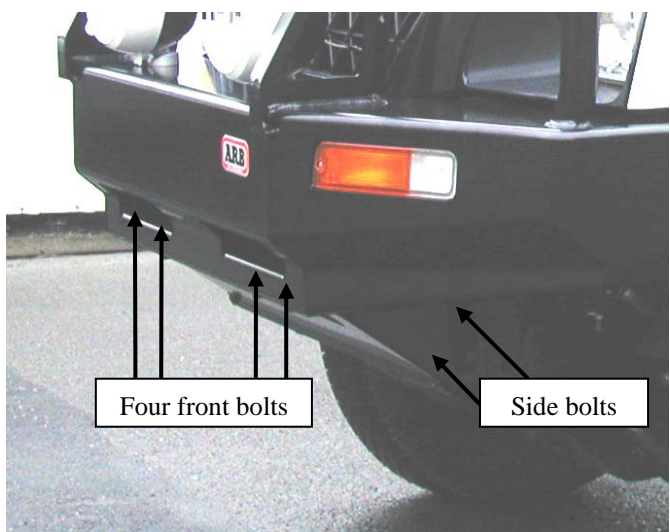
BAR FITTMENT



17. Once happy with the position of the bull bar and all of the bolts have been tightened, using the drill and a long shank 10mm drill bit, drill a hole through the chassis extension using the hole in the impact absorber as a guide.
18. Fix in place with a M10 x 1.5 x 35mm bolt, M10 spring washer and M10 flat washer. Repeat for the opposite side.



19. Fit the new indicators into the bull bar recess by pushing the plastic plugs supplied into the holes in the indicator recess. Then secure the indicator with the screws supplied. Plug a indicator loom into each indicator, and then wire up to the vehicle.



20. Fit the stone tray to the vehicle. Fix in place along the front of the bar with four M6 x 16mm black bolts, M6 black spring and flat washers.
21. Using four (two either side) M6 x 16mm black bolts, black M6 flat washers and M6 flange nuts; attach the side of the stone tray to the impact absorbers.

Once finished make sure all bolts have been tightened and all wires are away from any hot, sharp or moving parts of the car.