



# **FITTING INSTRUCTIONS**

Part Number: 4410020

Description: ARB "DAKAR" SIDE STEPS TO SUIT TOYOTA LAND CRUISER  
60 SERIES

## **WARNING**

- ◆ This product must be installed exactly as per these instructions using only the hardware supplied.
- ◆ Do not use this product for any vehicle make or model, other than those specified by ARB.
- ◆ This product or its fixing must not be modified in any way.
- ◆ The installation of this product may require the use of specialized tools and/or techniques
- ◆ It is recommended that this product is only installed by trained personnel
- ◆ These instructions are correct as at the publication date. ARB Corporation Ltd. cannot be held responsible for the impact of any changes subsequently made by the vehicle manufacturer
- ◆ During installation, it is the duty of the installer to check correct operation/clearances of all components
- ◆ Work safely at all times
- ◆ Unless otherwise instructed, tighten fasteners to specified torque

---

**[www.arb.com.au](http://www.arb.com.au)**

Corporate Head Office

42-44 Garden St  
Kilsyth, Victoria  
AUSTRALIA 3137



Tel: +61 (3) 9761 6622  
Fax: +61 (3) 9761 6807

## FITTING REQUIREMENTS

### REQUIRED TOOLS FOR FITMENT OF PRODUCT:

Basic tool kit	Non acidic silicon
----------------	--------------------

### HAVE AVAILABLE THESE SAFETY ITEMS WHEN FITTING PRODUCT:

Protective eyewear	Hearing protection
	

**NOTE:** 'WARNING' notes in the fitting procedure relate to OHS situations, where to avoid a potentially hazardous situation it is suggested that protective safety gear be worn or a safe work procedure be employed. If these notes and warnings are not heeded, injury may result.

WHERE USED	PART No	QTY	DESCRIPTION
<b>SIDE STEPS TO CHASSIS RAILS</b>	6562518L	1	Side rail assembly left hand side
	6562518R	1	Side rail assembly right hand side
	6151009	6	U-Bolt 140 x 85 x 16mm
	6151137	12	Nut M16 hex head
	4581051	12	Washer flat M16
	4581052	12	Washer spring M16
<b>ALUMINIUM STEPS TO SIDE RAILS</b>	3193758L	1	Step checker plate Dakar side step
	3193758R	1	Step checker plate Dakar side step
	6151200	16	Bolt M6 x25mm coach
	4581084	16	Washer M6 flat panel
	6151128	16	Nut M6 flange
<b>MISCELLANEOUS</b>	271BLK	4	Side rail rubber plug
	215637	2	ARB logo sticker

## FITTING PROCEDURE



1. Place three U-bolts around the passenger side chassis rail so that they roughly line up with the feet of the side steps.

**NOTE:** Due to the age of these vehicles and compression of the body mounts, it may be necessary to increase the clearance between the side rail chassis bracket and floor pan.



2. On the driver's side chassis rail, undo the brake and fuel line retaining bolts and place the U-Bolts between the chassis rail and the fuel and brake lines.

**CAUTION** DO NOT PUT THE U-BOLTS OVER THE TOP OF THE FUEL AND BRAKE LINES AS THIS WILL CAUSE THEM TO FAIL.



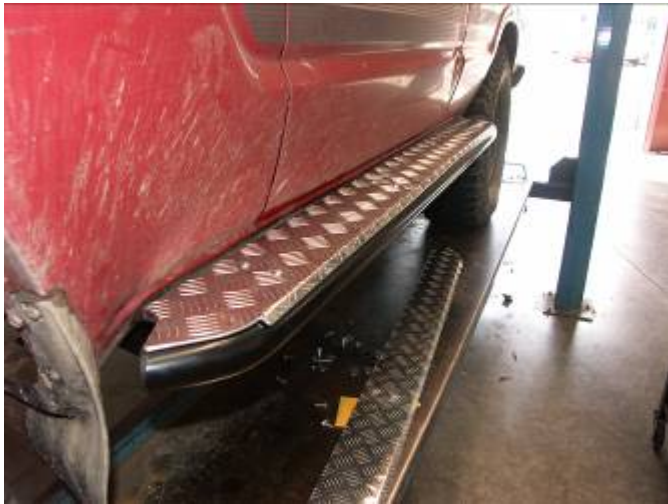
3. Place the rubber plugs in the ends of the side steps.
4. With the help of another person, lift the side rails into position and fix in position using six M16 hex nuts, M16 flat and spring washers. Repeat for the other side.

**NOTE:** These side rails have been designed to suit vehicles with body lifts up to 50mm. Use the appropriate holes in the chassis brackets to suit the body height.

## FITTING PROCEDURE



5. Align the side steps and tighten all the nuts, repeat for the other side.
6. Apply a bead of silicon along the top edge of the side step.



7. Place the aluminium step plates on the side steps and fix in place using the M6 x 25mm coach bolts, M6 panel washers and M6 flange nuts.