



FITTING INSTRUCTIONS

Part Number: **3740020**

Product **DUAL CAB RACK MOUNTING KIT (Suited to 3800250 & 3800253 racks)**

Description:

Suited to **Mazda BT50 & Ford Ranger 2011 On**
vehicle/s:

WARNING

ALSO, NOTE THE FOLLOWING:

- ◆ This product must be installed exactly as per these instructions using only the hardware supplied.
- ◆ In the event of damage to any cab rack component, contact your nearest authorised ARB stockist. Repairs or modifications must not be attempted.
- ◆ Do not use this product for any vehicle make or model, other than those specified by ARB.
- ◆ Do not remove labels.
- ◆ This product or its fixing must not be modified in any way.
- ◆ The installation of this product may require the use of specialized tools and/or techniques
- ◆ It is recommended that this product is only installed by trained personnel
- ◆ These instructions are correct as at the publication date. ARB Corporation Ltd. cannot be held responsible for the impact of any changes subsequently made by the vehicle manufacturer
- ◆ During installation, it is the duty of the installer to check correct operation/clearances of all components
- ◆ Work safely at all times
- ◆ Unless otherwise instructed, tighten fasteners to specified torque

ARB 4x4 ACCESSORIES

Corporate Head Office

42-44 Garden St
Kilsyth, Victoria
AUSTRALIA 3137

Tel: +61 (3) 9761 6622
Fax: +61 (3) 9761 6807

Australian enquiries
North & South American enquiries
Other international enquiries

sales@arb.com.au
sales@arbusa.com
exports@arb.com.au

www.arb.com.au

WARNING

NOTE THE FOLLOWING:

Your ARB Roof Rack has a maximum carrying capacity of 70kg. This load should not be exceeded and all loads must be tied down securely. If you have a cage with mesh fitted, secure the load to the main framing of the cage as well as the mesh.

It is important to follow the listed usage instructions;

- ◆ The vehicle owner's manual should be consulted prior to loading the roof rack as the manufacturer's recommended maximum load for the vehicle's roof may be less than the maximum load specified for the roof rack.
- ◆ Load must be evenly distributed and adequately secured.
- ◆ Any weight carried on the roof of the vehicle will adversely affect its handling, particularly in cornering or in a cross-wind, the vehicle should therefore be driven with increased discretion.
- ◆ Regularly check the tightness of the securing clamps and the security of the load.
- ◆ Attention is directed to statutory requirements regarding maximum permissible projections from vehicles.



All bolts should be checked for tightness prior to touring to ensure the rack is fastened correctly – refer torque specifications.

FITTING REQUIREMENTS

REQUIRED TOOLS FOR FITMENT OF PRODUCT:

Metric Allen key set	Hole punch
Non acidic silicon (neutral cure)	Sharp knife
Drill stop	Tin snips
Torx driver set	Rust preventative paint

HAVE AVAILABLE THESE SAFETY ITEMS WHEN FITTING PRODUCT:

Protective eyewear		Hearing protection	
--------------------	---	--------------------	---

NOTE: 'WARNING' notes in the fitting procedure relate to OHS situations, where to avoid a potentially hazardous situation it is suggested that protective safety gear be worn or a safe work procedure be employed. If these notes and warnings are not heeded, injury may result.

FASTENER TORQUE SETTINGS:

SIZE	Torque Nm	Torque lbft
M6	9Nm	7lbft
M8	22Nm	16lbft
M10	44Nm	32lbft
M12	77Nm	57lbft

PARTS LISTING			
APPLICATION.	PART NO.	QTY	DESCRIPTION
MOUNTING FEET	6317629	4	MOUNTING FOOT
	3193759	4	PLATE CLAMP
	6151046	8	WASHER FLAT M6
	6151162	8	NYLOC NUT M6
	6151394	8	SCREW BTN HD M6X30mm
	5846272	4	RUBBER PACKER
RAILS & WIND DEFLECTOR	3759482L	1	RAIL LH
	3759482R	1	RAIL RH
	3759483	1	WIND DEFLECTOR BRACKET
	4581094	4	WASHER SPRING M8
	4581081	4	WASHER FLAT M8
	6151046	5	WASHER FLAT M6
	6151256	5	SCREW BTN HD M6x16mm
	6151315	5	NUT CAGED M6
	6151295	4	SCREW BTN HD M8x20mm
	4581305	5	WASHER SPRING M6
CAB RACK	4581094	8	WASHER SPRING M8
	4581081	8	WASHER FLAT M8
	6151263	8	SCREW M8x20mm
	3193522	4	NUT PLATE CABRACK
MISCELLANEOUS	6781408	2	TAPE DOUBLE SIDED 0.8x15x300
	665506	2	TAPE PROTECTION TT40 30x30mm

FITTING PROCEDURE

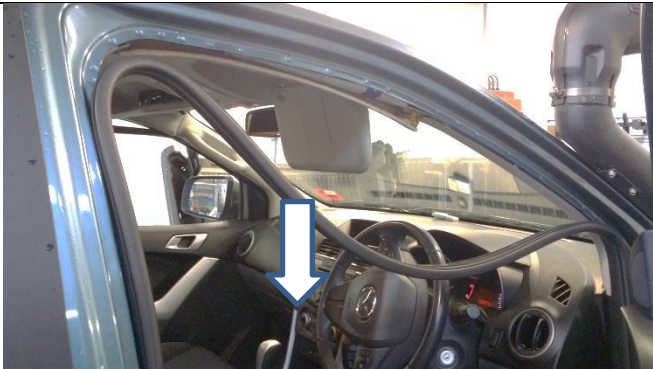


1. Remove the exterior roof trim from both sides of the vehicle. Take care not to bend the trim, as it will be reused.

Remove all remaining double sided tape and residue glue from both the roof channels and trim. It is recommended to use an adhesive cleaner to perform this task.



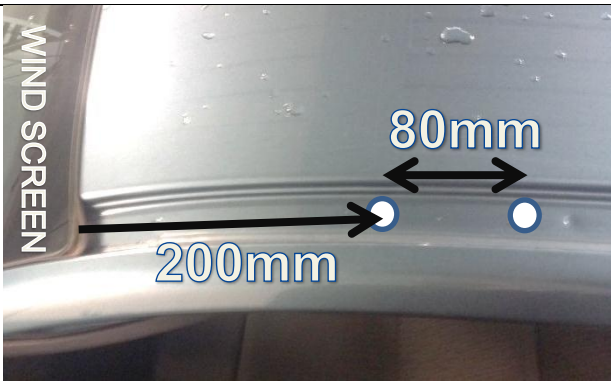
2. Remove the four grab handles from the front & rear pillars (2x torx screws retaining each handle).



3. Pull down the door seals from the front and rear pillars so the interior trim can be removed.



4. Remove plastic covers located at the front pillars under the air bag positioned under the roof lining and place aside for reuse.



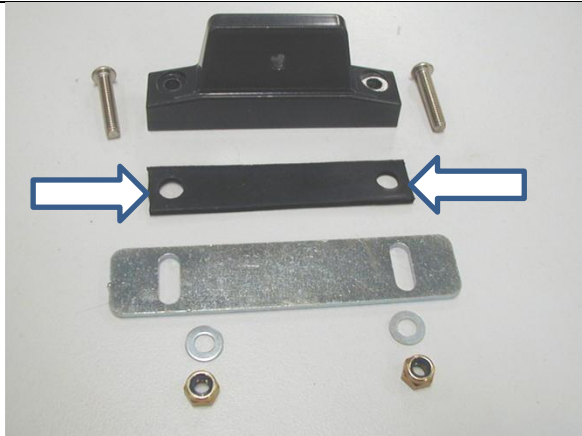
5. Using a tape measure, accurately mark point on roof channel 200mm rearward of front wind screen ensuring location marked is central between inner channel wall and edge of silicone running along outside channel wall.
 6. Mark second point on roof channel 80mm rearward of first point marked.
- Repeat steps 5 & 6 for opposite side.



7. Using a hole punch, punch at locations marked in roof channel.
 8. Using an $\Phi 8\text{mm}$ drill bit, drill stop and power drill, drill at locations marked ensuring that only 10mm of the drill bit protrudes through the roof channel so as to avoid drilling through air-bags.
- Remove all burrs and sharp edges from drilled holes and vacuum swarf.



9. Apply cold galvanising solution or rust preventative paint to cut edges of drilled holes.

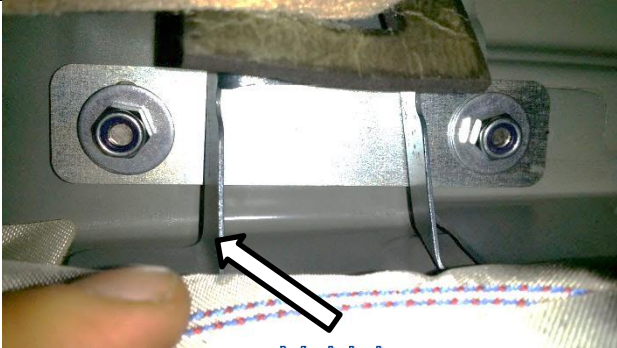


10. Cut ends of rubber packers to suit width of mounting foot.



11. Sit mounting foot onto each channel with rubber packer sitting between mounting foot and the roof channel. Position 2x M6x30mm screws through holes.

Repeat for opposite side.

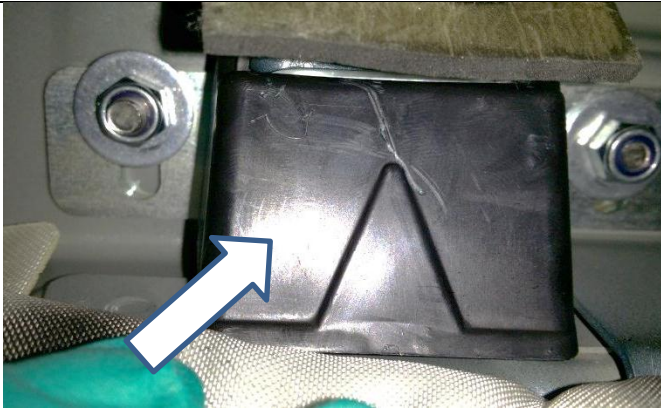


Vehicle re-enforcement bracket

12. Gently moving the airbag out of the way, slide plate clamp through opening of vehicle pillar re-enforcement bracket.

13. Loosely fasten mounting foot using 2xM6 washers and M6 nyloc nuts.

Repeat for opposite side.



14. Reposition plastic cover that was removed in step 4 for both sides.



REAR MOUNTING FOOT

Front

15. Loosely fasten mounting foot to rear of LH rail.

16. Sit Rail on top of channel and loosely fasten to front mounting foot.

Note: Front section of rail has taller height than the rear. Position accordingly.



17. Mark hole positions onto roof channel using rear mounting foot as guide.
18. Remove rail and rear mounting foot from roof and punch holes at locations marked using hole punch.
19. Using an $\Phi 8\text{mm}$ drill bit, drill stop and power drill, drill at locations marked ensuring that only 10mm of the drill bit protrudes through the roof channel so as to avoid drilling into air-bags.

Remove all burrs and sharp edges from drilled holes and vacuum swarf.



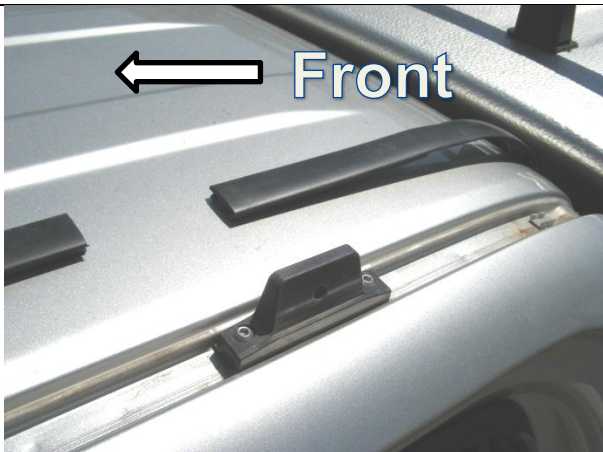
20. Apply cold galvanising solution or rust preventative paint to cut edges of drilled holes.

Repeat steps 15 – 20 for opposite side.



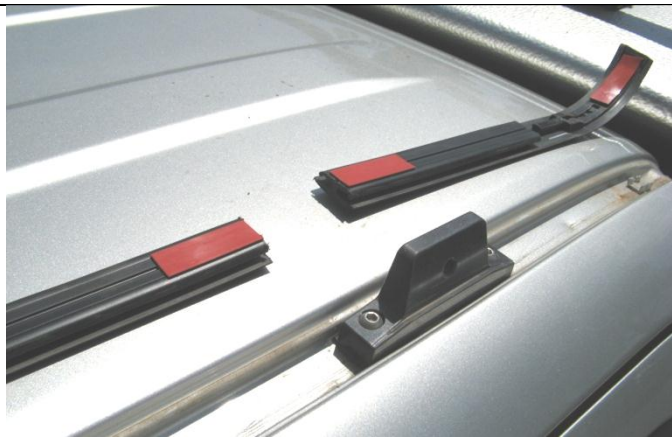
21. Loosely fasten rear mounting foot to roof channel using the same hardware used in steps 11-13.

Repeat for opposite side.

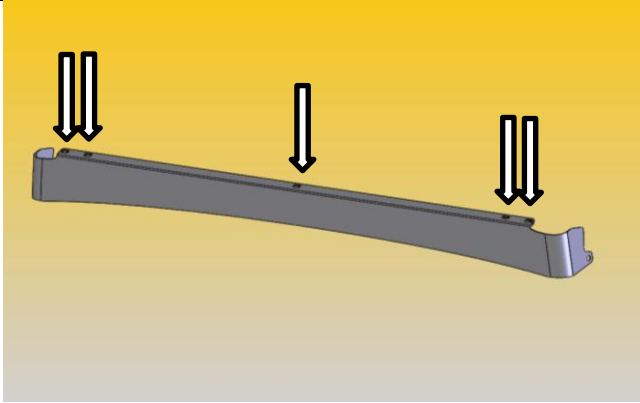


22. Aligning exterior roof trim removed in step 1 beside mounting feet in the roof channel, mark and then cut out sections where mounting feet are located using tin snips.

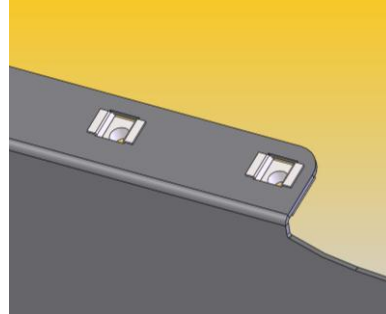
There should be six separate sections in total.



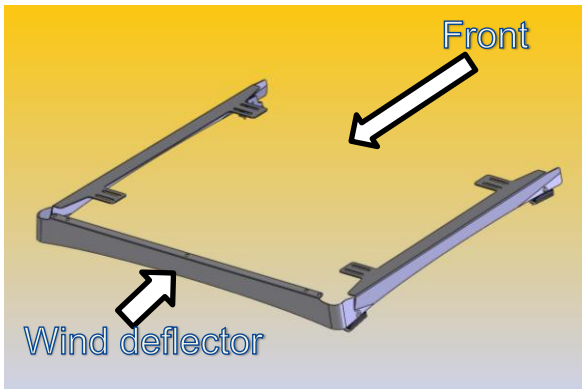
23. Cut two pieces of double sided tape into equal lengths of 50mm (12 pieces in total). Apply tape to each end of the roof trim sections and position each back into roof channel.



24. Position 5x M6 cage nuts in wind deflector.

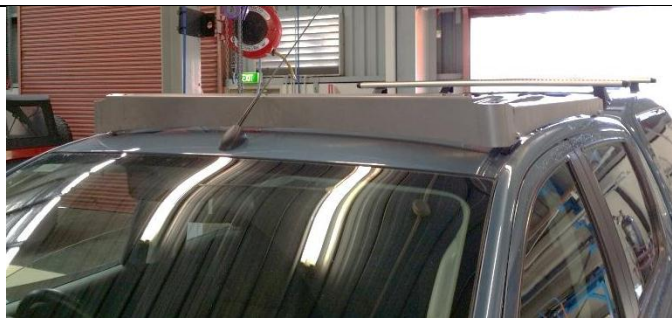
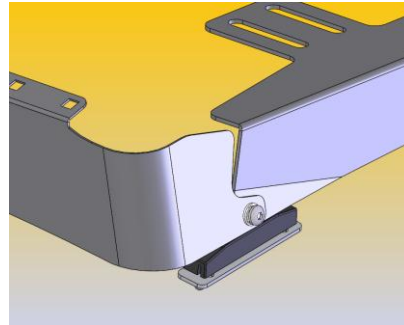


Note: Two outer positions not needed for 39500250 rack.



25. With the aid of a second person (one on either side of the cabin) loosely fasten both rails and wind deflector to mounting feet using 4x M8x20mm BTN HD screws, 4x M8 spring washers and 4x M8 flat washers.

Note: orientation of wind deflector and rail:



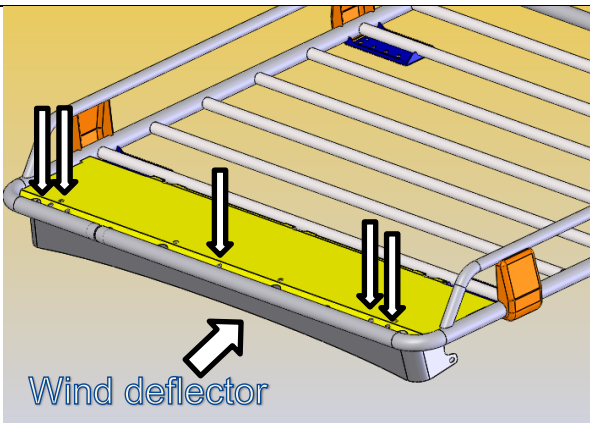
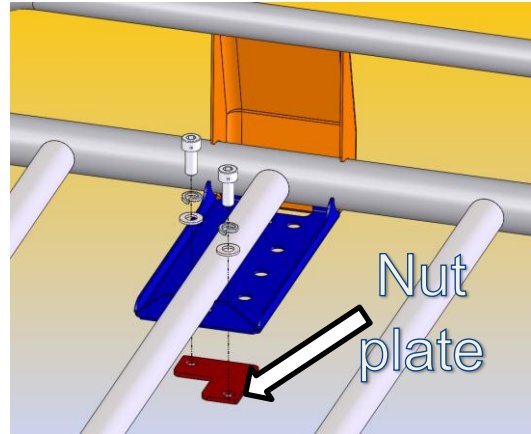
26. Tighten M6 fasteners fixing mounting feet to roof.




M6 – 9Nm




27. Re-fit all vehicle components moved in steps 1-3 in reverse order to removal.
28. With the assistance of another person, position rack on top of rails and loosely fasten to rails using 8x M8x20mm screws, 8x M8 spring washers, 8x M8 flat washers and 4x nut plates.



29. Fasten rack to wind deflector using 5x M6x16mm screws, 5x M6 spring washers and 5x flat washers. Tighten.
30. Tighten M8x20mm BTN HD screws joining rails and wind deflector to mounting feet.
31. Tighten M8x20mm screws joining rack to rails.

 M8 – 22Nm

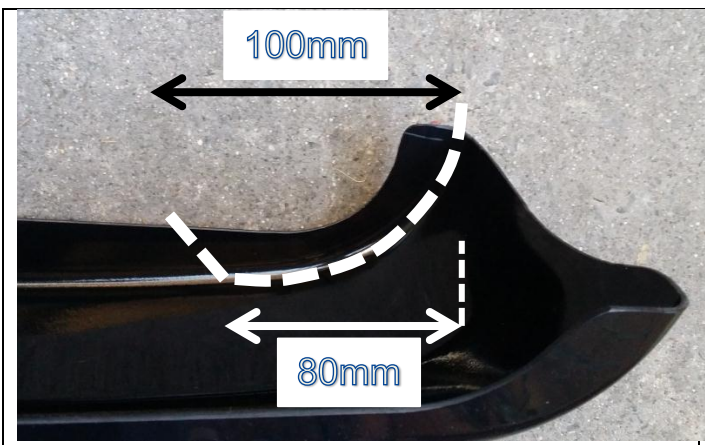
 M6 – 9Nm

Note: Two outer positions not needed for 39500250 rack.



32. Remove antenna tip from roof (unscrews) and apply 30x30mm protection tape onto cab rack front tube where antenna makes contact.
33. Re-fit antenna.

Note: 3800250 trade rack will require protection tape on both top and bottom front tubes.



34. Note if plastic deflector accessory Part No. 3700320 is fitted, please trim edges as shown in order for it to sit correctly on cab rack. Cut along radius of deflector as guide.

Refer to 3700320 instructions for application.

FITTED PRODUCT



Mazda BT50 with 3800253 Cab Rack installed