

# ARB AIR LOCKER *Air Operated Locking Differentials*

## **RD123** Mazda 8",RR,shim adjusted

### Specs:

Axle Spline	30 tooth
Ratio Supported	All
Ring Gear ID	121.3mm [4.77"]
Ring Gear OD	205.5mm [8.09"]
Ring Gear Bolts	10 bolts on Ø146.25 [5.75"]
Ring Gear Torque	95Nm [70 ft-lb]
Backlash	0.15-0.25mm [0.006-0.010"]
Bearing Cap Torque	81Nm [60 ft-lb]

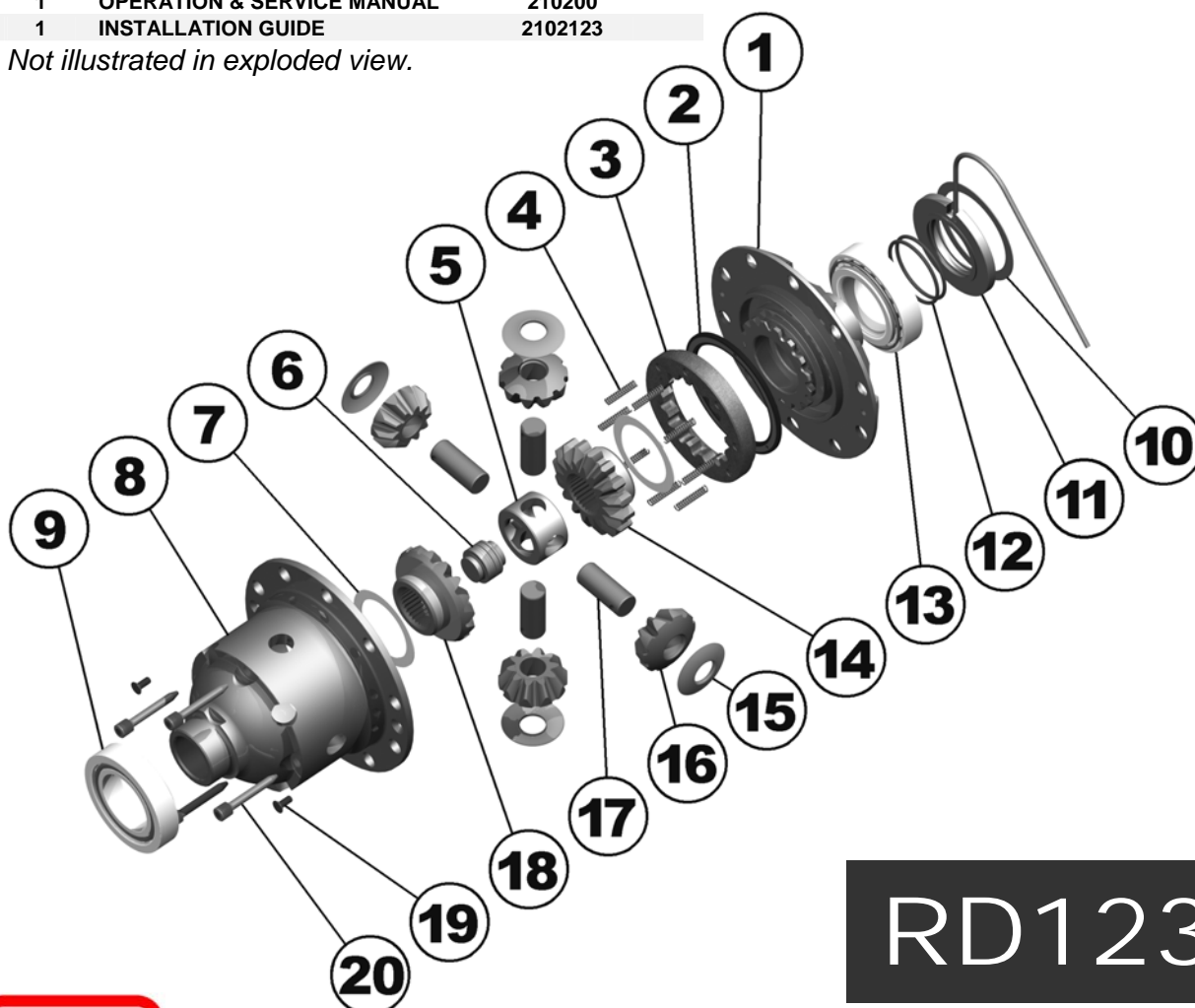
ITEM #	QTY	DESCRIPTION	PART #	NOTES
1	1	FLANGE CAP ASSEMBLY	028508	
2	1	BONDED SEAL	160701	
3	1	CLUTCH GEAR	050803	
4	8	RETURN SPRING	150107	
5	1	SPIDER BLOCK	070503	
6	1	THRUST BLOCK	110505	
*	1	THRUST BLOCK	110508	
7	2	SIDE GEAR THRUST WASHER	151011	
8	1	DIFFERENTIAL CASE	013108	
9	1	TAPERED ROLLER BEARING	NOT SUPPLIED	
10	1	SHIM KIT	SHK010	
11	1	SEAL HOUSING ASSEMBLY	081804	
12	2	SEAL HOUSING O-RING	160235	1
13	1	TAPERED ROLLER BEARING	NOT SUPPLIED	
14	1	SPLINED SIDE GEAR	SEE NOTE	2
15	4	PINION THRUST WASHER	151112	
16	4	PINION GEAR	SEE NOTE	2
17	4	SHORT CROSS SHAFT	061402	
18	1	SIDE GEAR	SEE NOTE	2
19	2	COUNTERSUNK SCREW	200213	
20	4	CROSS SHAFT RETAINING PIN	120601	
*	1	BULKHEAD FITTING KIT (O-RING TYPE)	170111	
*	1	PUSH-IN FITTING (5mm to 1/8"BSPP)	170201	
*	1	AIR LINE (5mm DIA X 6m LONG)	170301	
*	1	NIPPLE (1/8" to 1/8" BSPT)	170501	
*	1	SOLENOID VALVE (12V)	180103	
*	1	SWITCH	180209	
*	1	SWITCH COVER (REAR)	180211	
*	10	CABLE TIE	180301	
*	1	WARNING LABEL	210101	
*	1	BUMPER STICKER	210102	
*	1	OPERATION & SERVICE MANUAL	210200	
*	1	INSTALLATION GUIDE	2102123	

### Notes:

- 1 For replacement O-rings use only BS133 Viton 75.
- 2 Available only as complete 6 gear set # 728J061

Not suitable for adjuster nut type third member.  
Newer shim type third member made by Dana Spicer will retrofit to older shafts and banjo.

\* Not illustrated in exploded view.



# RD123

