

# ARB AIR LOCKER *Air Operated Locking Differentials*

## **RD138** Land Rover, 24 SPL, Banjo, P38A

### Specs:

ITEM #	QTY	DESCRIPTION	PART #	NOTES
01	1	FLANGE CAP ASSEMBLY	027317	
02	1	BONDED SEAL	160702	
03	1	CLUTCH GEAR	050806	
04	2	SHORT CROSS SHAFT	060403	
05	1	LONG CROSS SHAFT	060204	
06	1	SIDE GEAR	SEE NOTE	2
07	2	SIDE GEAR THRUST WASHER	151010	
08	2	COUNTERSUNK SCREW	200213	
09	3	RETAINING PIN	120601	
10	2	TAPERED ROLLER BARING	NOT SUPPLIED	
11	1	SEAL HOUSING RETAINING CLIP	150602	
12	1	SEAL HOUSING ASSEMBLY	082002	
13	2	SEAL HOUSING O-RINGS	160235	1
14	1	ADJUSTER NUT	100201	
15	8	RETURN SPRINGS	150113	
16	1	SPLINED SIDE GEAR	SEE NOTE	2
17	4	PINION GEAR	SEE NOTE	2
18	4	PINION THRUST WASHER	151110	
19	1	SPIDER BLOCK	070201	
20	1	DIFFERENTIAL CASE	013017	
*	1	BULKHEAD FITTING KIT (O-RING TYPE)	170111	
*	1	PUSH-IN FITTING (5mm to 1/8" BSPP)	170201	
*	1	NIPPLE (1/8" to 1/8" BSPT)	170501	
*	1	AIR LINE (5mm DIA X 6m LONG)	170301	
*	1	SOLENOID VALVE (12V)	180103	
*	1	SWITCH	180209	
*	1	SWITCH COVER (FRONT)	180210	
*	1	SWITCH COVER (REAR)	180211	
*	10	CABLE TIE	180301	
*	1	WARNING LABEL	210101	
*	1	BUMPER STICKER	210102	
*	1	OPERATING & SERVICE MANUAL	210200	
*	1	INSTALLATION GUIDE	2102138	

Axle Spline 24 tooth, Ø31.5mm [1.24"]  
 Ratio Supported 3.54:1  
 Ring Gear ID 125.4mm [4.94"]  
 Ring Gear Bolts 10 bolts on Ø142mm [5.59"]  
 Ring Gear Torque 58Nm [43 ft-lb]  
 Backlash 0.10-0.17mm [0.004-0.007"]  
 Bearing Cap Torque 90Nm [66 ft-lb]

### Notes:

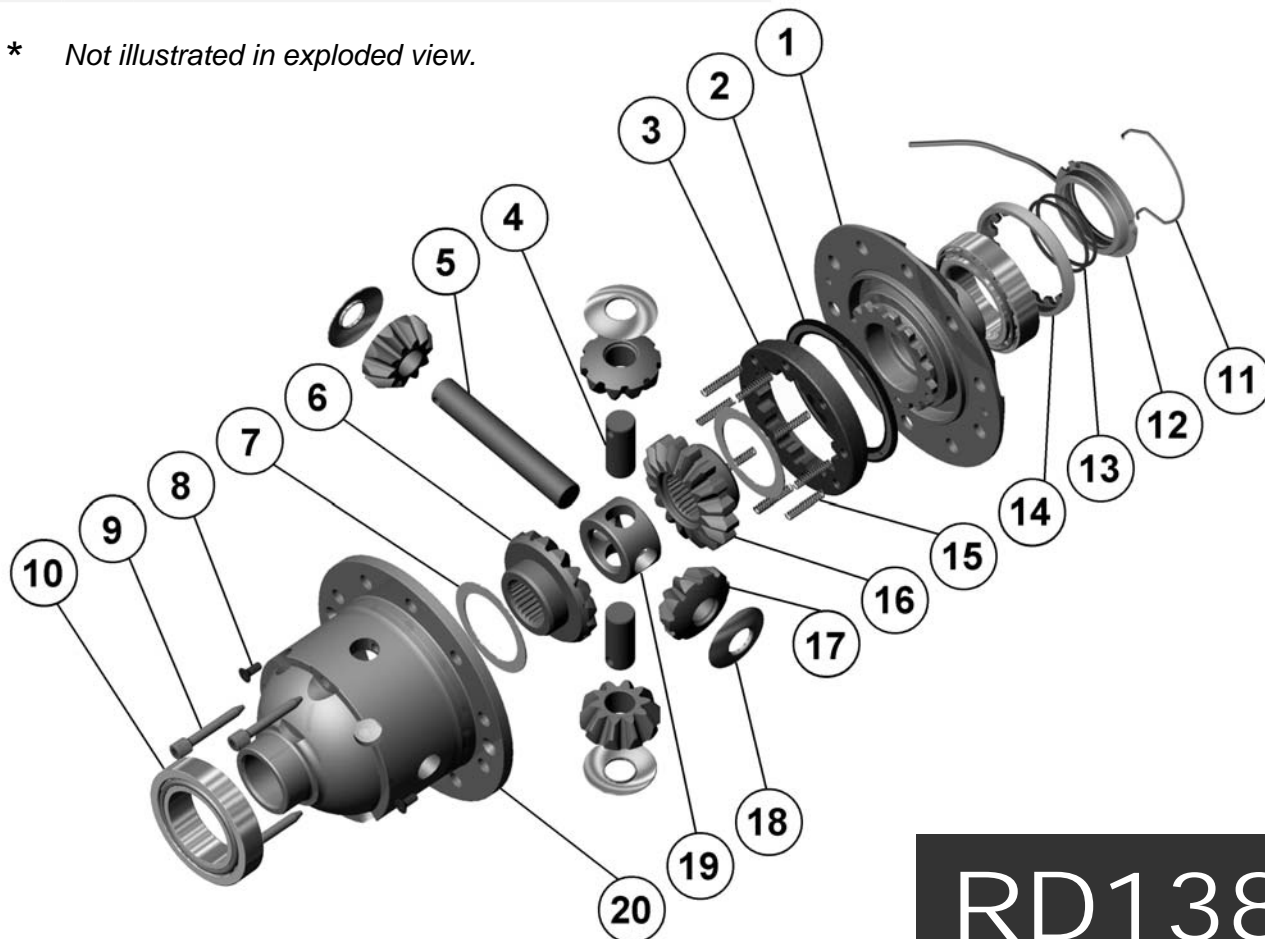
- 1 For replacement O-rings use only BS133 Viton 75.
- 2 Available only as complete 6 gear set # 728H141

This model replaces the P38A differential carrier with a flange diameter of 205mm [8.07"].  
 For the Rover type with a flange diameter of 174mm [6.95"] refer to RD128 (**Section 2.128**).

5mm [3/16"] ring gear spacer plate (ARB part# 'RD03A') is available for use with early Land Rover 4.7:1 ratio gear but longer bolts must be used (Land Rover part# 576521).

Refer to seal housing set-up tech note (**Sec. 5.2**).

\* Not illustrated in exploded view.



# RD138

